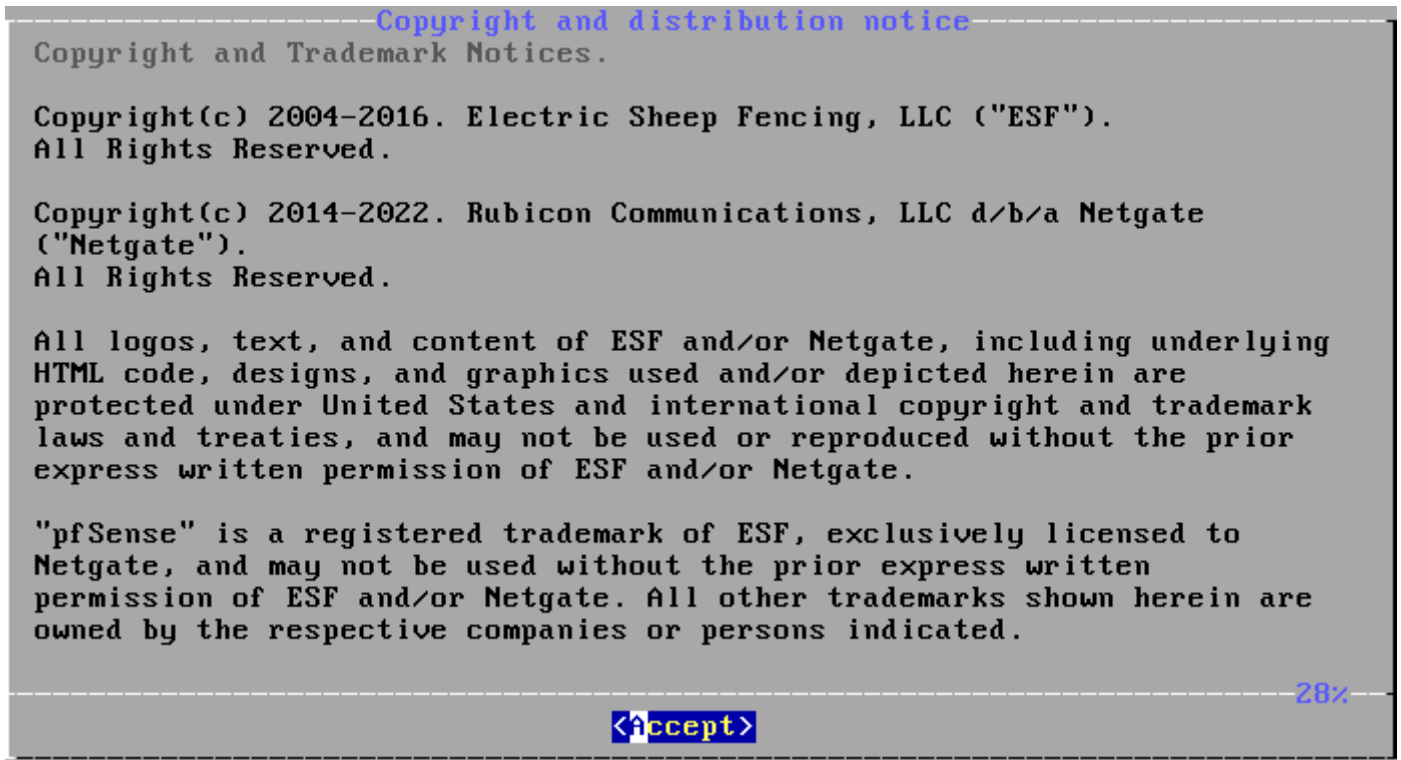


# Instalación y configuración

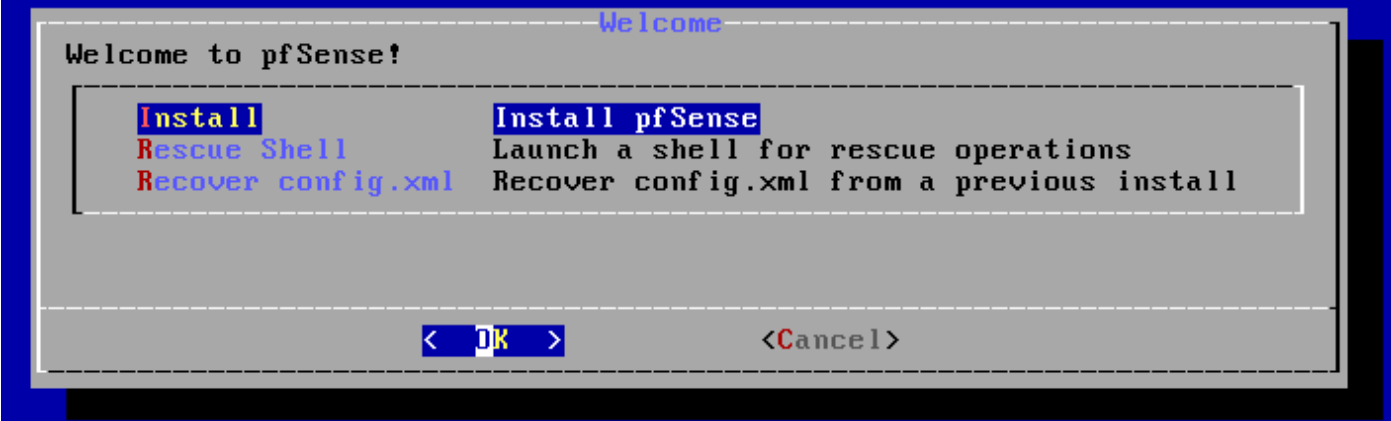
Ahora que nuestra configuración de Proxmox está configurada, vamos a cambiar a la configuración de pfSense. Esto se hará a través de la consola dentro de Proxmox. Para ello iniciamos la máquina virtual de pfSense y empezamos con la instalación.

1. Acepte los avisos de derechos de autor y marcas registradas si está de acuerdo.



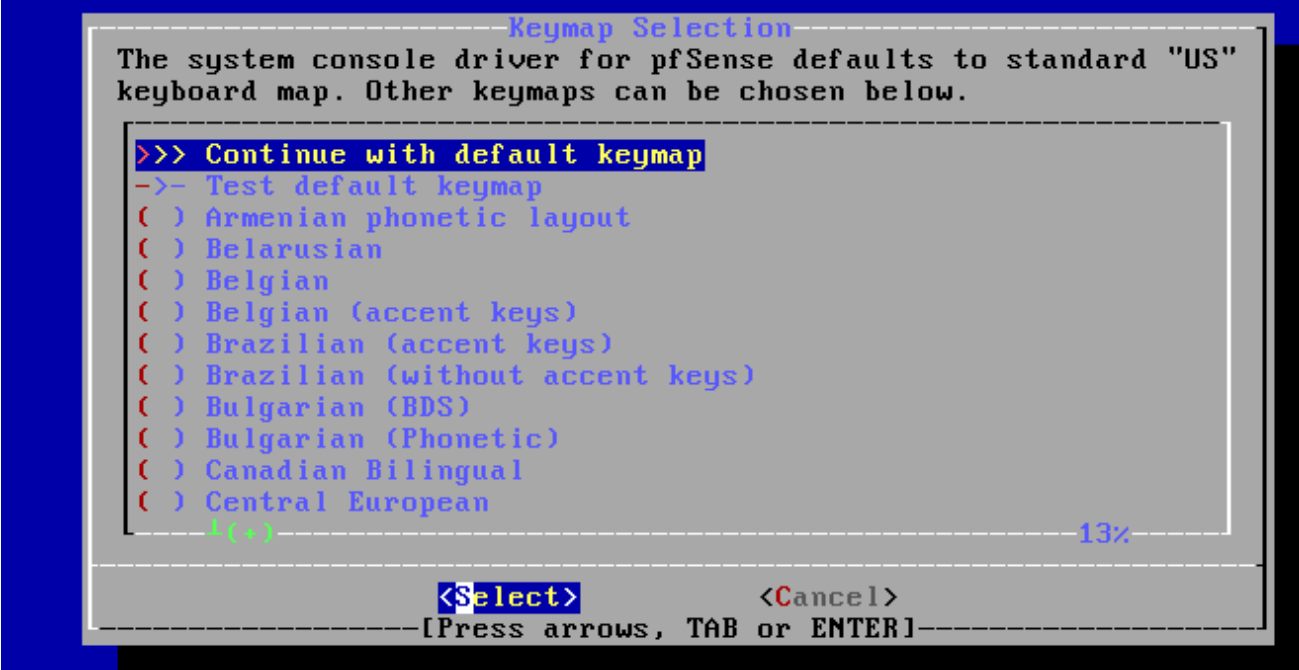
2. Seleccione **instalar pfSense**.

## pfSense Installer



3. Seleccione un mapa de teclas o continúe con el predeterminado.

## pfSense Installer



4. Seleccione **Rooteo guiado en ZFS** y luego seleccione **Aceptar**.

## pfSense Installer

### Partitioning

How would you like to partition your disk?

<b>Auto (ZFS)</b>	<b>Guided Root-on-ZFS</b>
Auto (UFS) BIOS	Guided Disk Setup using BIOS boot method
Auto (UFS) UEFI	Guided Disk Setup using UEFI boot method
Manual	Manual Disk Setup (experts)
Shell	Open a shell and partition by hand

< **OK** >

<Cancel>

5. Seleccione **instalar** para continuar con la instalación.

## pfSense Installer

### ZFS Configuration

Configure Options:

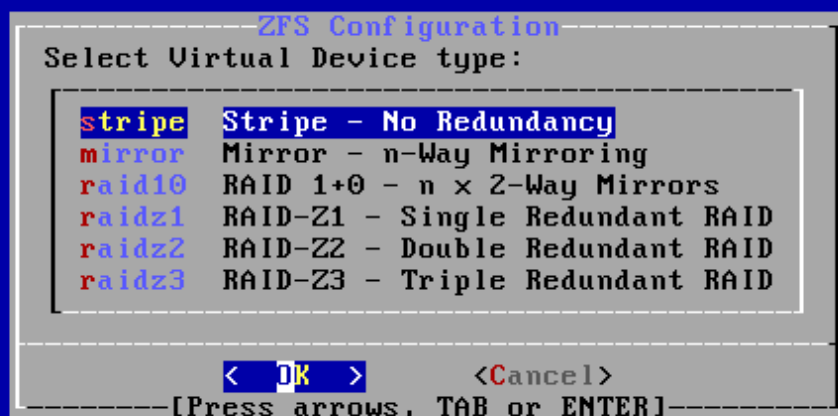
<b>&gt;&gt;&gt; Install</b>	<b>Proceed with Installation</b>
T Pool Type/Disks:	stripe: 0 disks
- Rescan Devices	*
- Disk Info	*
N Pool Name	pfSense
4 Force 4K Sectors?	YES
E Encrypt Disks?	NO
P Partition Scheme	GPT (BIOS)
S Swap Size	1g
M Mirror Swap?	NO
W Encrypt Swap?	NO

<**Select**>

<Cancel>

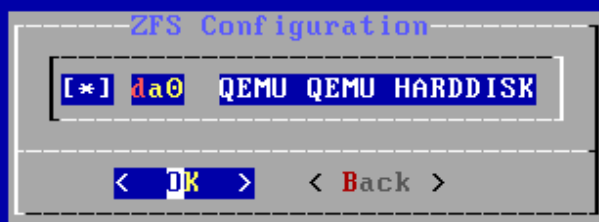
6. En este paso, puede seleccionar **tira, sin redundancia**. Si desea utilizar la redundancia, puede modificarla aquí (aunque su configuración inicial será diferente a la de este tutorial).

## pfSense Installer



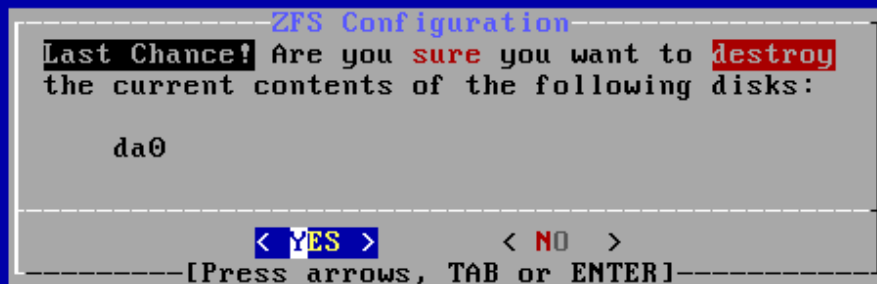
7. Seleccione el **disco duro** y luego **Aceptar**.

## pfSense Installer

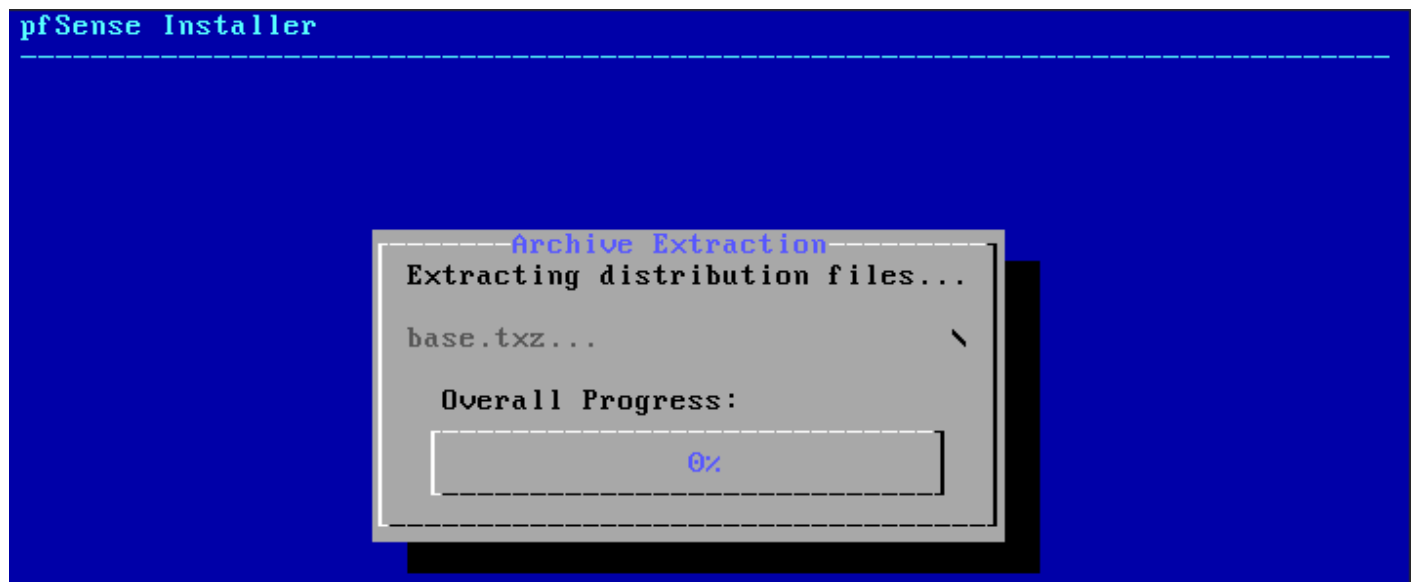


8. Si desea continuar, seleccione **sí**.

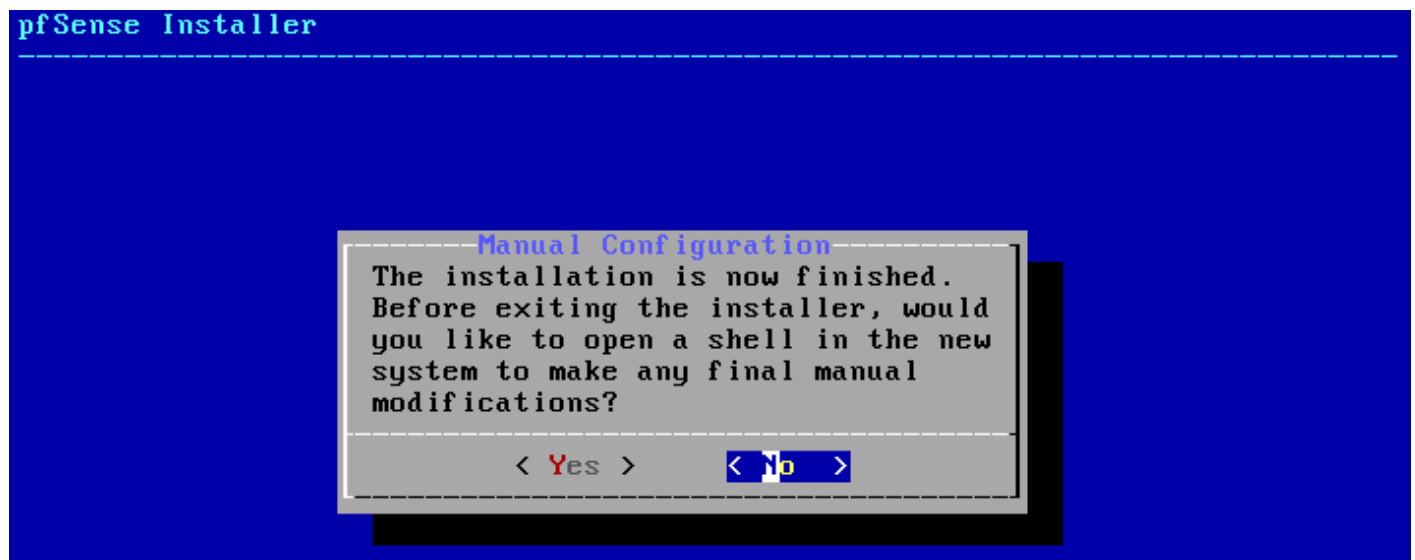
## pfSense Installer



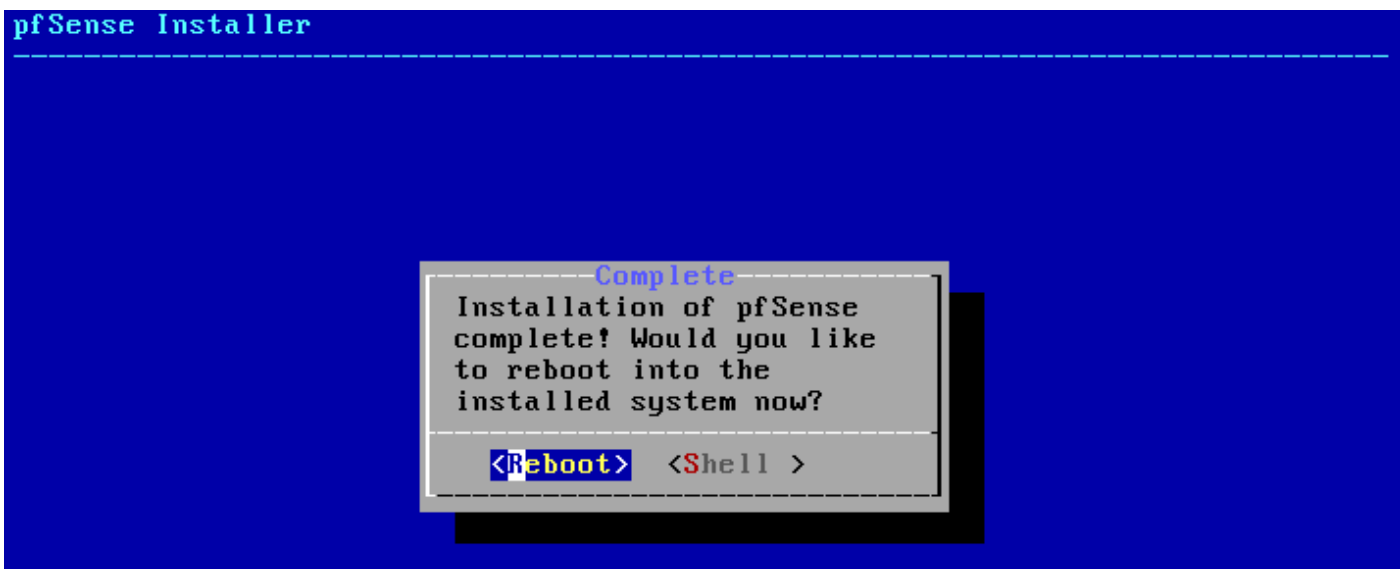
9. ¡El sistema operativo pfSense ahora estará instalado!



10. Seleccione **no** en la página de configuración manual.



11. Finalmente, **reinicie** el sistema.



## Configuración de WAN/LAN

En este punto, nuestra máquina virtual está instalada y configurada y el sistema operativo pfSense está completamente instalado. El último paso es asegurarse de que nuestras interfaces estén configuradas correctamente dentro de pfSense para que podamos acceder a la consola de administración web.

1. A su WAN y LAN se le asignarán automáticamente direcciones IP (suponiendo que los cables de Ethernet estén conectados a cada puerto).

**Si esta información es correcta, puede acceder a pfSense navegando a la dirección IP de LAN. Tenga en cuenta que su dispositivo actual debe estar en la misma subred para acceder a él (en este ejemplo, la dirección IP del dispositivo debe ser 192.168.1.X).**

```

Starting syslog...done.
Starting CRON... done.
pfSense 2.6.0-RELEASE amd64 Mon Jan 31 19:57:53 UTC 2022
Bootup complete

FreeBSD/amd64 (pfSense.home.arp) (ttyv0)

KVM Guest - Netgate Device ID:

*** Welcome to pfSense 2.6.0-RELEASE (amd64) on pfSense ***

WAN (wan)      -> em0      -> v4/DHCP4: 192.168.100.105/24
LAN (lan)      -> em1      -> v4: 192.168.1.1/24

0) Logout (SSH only)          9) pfTop
1) Assign Interfaces          10) Filter Logs
2) Set interface(s) IP address 11) Restart webConfigurator
3) Reset webConfigurator password 12) PHP shell + pfSense tools
4) Reset to factory defaults  13) Update from console
5) Reboot system              14) Enable Secure Shell (sshd)
6) Halt system                 15) Restore recent configuration
7) Ping host                   16) Restart PHP-FPM
8) Shell

Enter an option: █

```

2. Si no es correcto, seleccione **2** para acceder a la sección **de asignación de interfaces**, luego ingrese el número **de interfaz** que desea configurar.

```

0) Logout (SSH only)          9) pfTop
1) Assign Interfaces          10) Filter Logs
2) Set interface(s) IP address 11) Restart webConfigurator
3) Reset webConfigurator password 12) PHP shell + pfSense tools
4) Reset to factory defaults  13) Update from console
5) Reboot system              14) Enable Secure Shell (sshd)
6) Halt system                 15) Restore recent configuration
7) Ping host                   16) Restart PHP-FPM
8) Shell

Enter an option: 2

Available interfaces:

1 - WAN (em0 - dhcp, dhcp6)
2 - LAN (em1 - static)

Enter the number of the interface you wish to configure: █

```

3. Los pasos serán diferentes en función de si seleccionó la interfaz WAN o LAN, pero tendrá que realizarla y configurarla como le gustaría que se configurara.

**NOTA** : Si no tiene una dirección IP WAN, reinicie su módem y luego reinicie pfSense.

```

2 - LAN (em1 - static)

Enter the number of the interface you wish to configure: 2

Enter the new LAN IPv4 address. Press <ENTER> for none:
> 192.168.100.1

Subnet masks are entered as bit counts (as in CIDR notation) in pfSense.
e.g. 255.255.255.0 = 24
     255.255.0.0   = 16
     255.0.0.0     = 8

Enter the new LAN IPv4 subnet bit count (1 to 32):
> 24

For a WAN, enter the new LAN IPv4 upstream gateway address.
For a LAN, press <ENTER> for none:
>

Enter the new LAN IPv6 address. Press <ENTER> for none:
>

Do you want to enable the DHCP server on LAN? (y/n) y
Enter the start address of the IPv4 client address range: 192.168.100.5
Enter the end address of the IPv4 client address range: 192.168.100.100

```

4. En la pregunta final, seleccione "n" para continuar usando HTTPS para la configuración web.

```

Do you want to revert to HTTP as the webConfigurator protocol? (y/n) n

```

5. Asegúrese de que el dispositivo en el que se encuentra actualmente esté en la misma subred que la subred LAN que eligió (o que tenga una ruta hacia ella).

**NOTA : Una vez más, si la configuración de WAN no parece estar obteniendo una dirección IP, reinicie su módem y luego reinicie pfSense.**

**https://DIRECCIÓN\_IP\_LAN**



Login to pfSense

**SIGN IN**

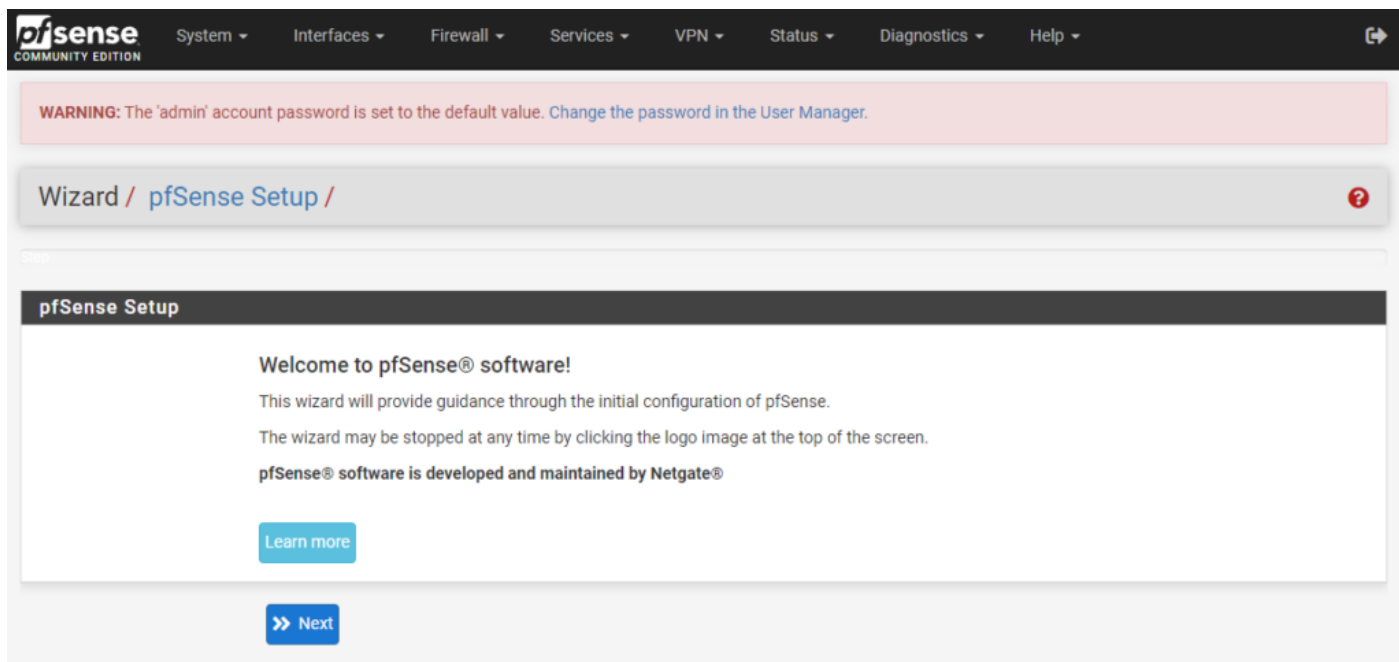
Username

Password

1. Ahora que podemos acceder a pfSense, inicie sesión con las siguientes credenciales:

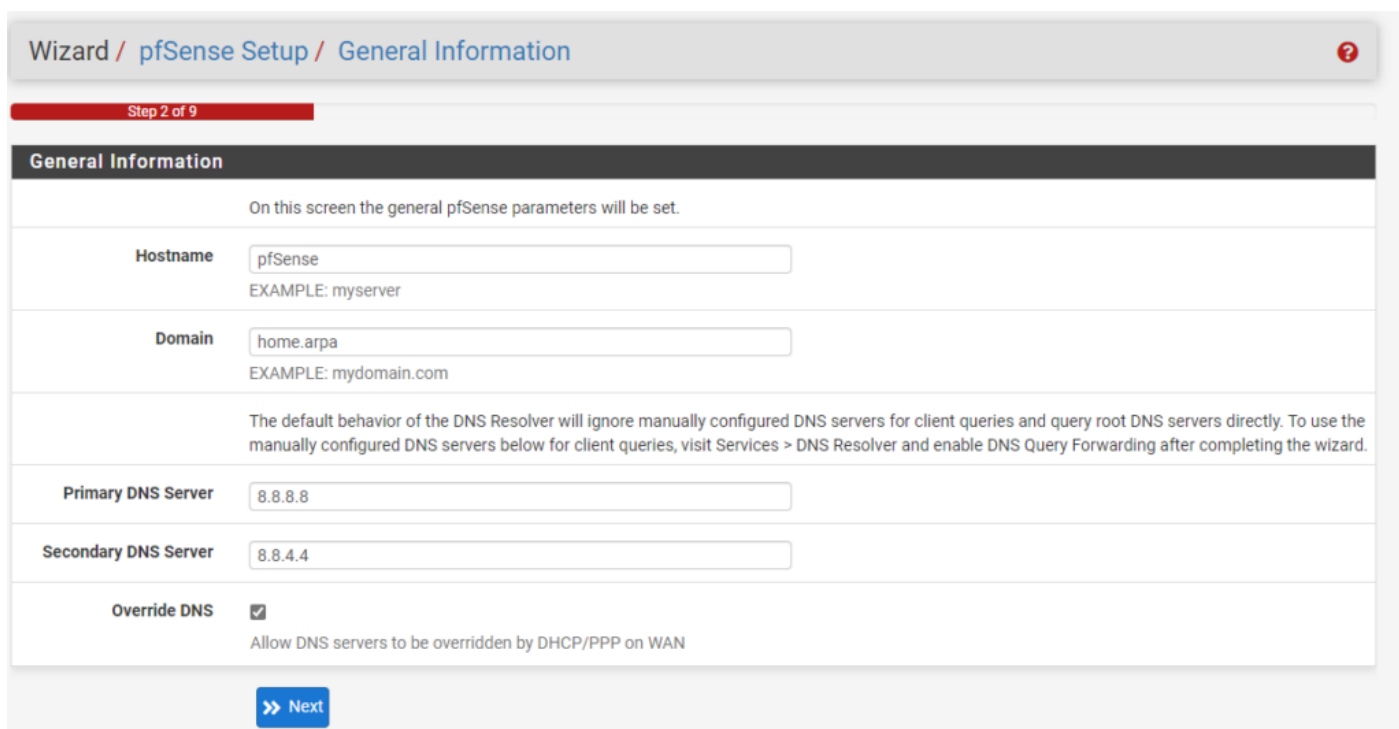
- **Nombre de usuario predeterminado de pfSense:** administrador
- **Contraseña predeterminada de pfSense:** pfsense

2. Los siguientes pasos nos guiarán a través de nuestra configuración de pfSense



The screenshot shows the pfSense Setup Wizard's welcome screen. At the top, there's a navigation bar with the pfSense logo and menu items: System, Interfaces, Firewall, Services, VPN, Status, Diagnostics, and Help. A warning banner at the top states: "WARNING: The 'admin' account password is set to the default value. Change the password in the User Manager." Below this, the breadcrumb trail reads "Wizard / pfSense Setup /". The main content area is titled "pfSense Setup" and contains a welcome message: "Welcome to pfSense® software! This wizard will provide guidance through the initial configuration of pfSense. The wizard may be stopped at any time by clicking the logo image at the top of the screen. pfSense® software is developed and maintained by Netgate®". There is a "Learn more" button and a "Next" button at the bottom.

3. Selecciona **siguiente** hasta que llegues a la sección de nombre de host, dominio, DNS primario y secundario. Rellena estos ajustes como quieras y, a continuación, pulsa **siguiente**.



The screenshot shows the "General Information" screen of the pfSense Setup Wizard. The breadcrumb trail is "Wizard / pfSense Setup / General Information". A progress bar indicates "Step 2 of 9". The section title is "General Information". Below the title, it says: "On this screen the general pfSense parameters will be set." The form contains the following fields:

- Hostname**: A text input field with "pfSense" entered. Below it, an example is shown: "EXAMPLE: myserver".
- Domain**: A text input field with "home.arpa" entered. Below it, an example is shown: "EXAMPLE: mydomain.com".
- Primary DNS Server**: A text input field with "8.8.8.8" entered.
- Secondary DNS Server**: A text input field with "8.8.4.4" entered.
- Override DNS**: A checkbox that is checked. Below it, a note says: "Allow DNS servers to be overridden by DHCP/PPP on WAN".

At the bottom, there is a "Next" button.

4. Selecciona un **servidor de tiempo** .

Wizard / pfSense Setup / Time Server Information

Step 3 of 9

### Time Server Information

Please enter the time, date and time zone.

Time server hostname	<input type="text" value="2.pfsense.pool.ntp.org"/>
Enter the hostname (FQDN) of the time server.	
Timezone	<input type="text" value="Etc/UTC"/>

>> Next

5. Deja la configuración WAN como DHCP, luego selecciona **siguiente**. (De esta manera puedes ir a tu router principal y dejar la ip que se le ha concedido por DCHP como ip estática y nunca cambiará.)

Wizard / pfSense Setup / Configure WAN Interface

Step 4 of 9

### Configure WAN Interface

On this screen the Wide Area Network information will be configured.

SelectedType	<input type="text" value="DHCP"/>
--------------	-----------------------------------

6. Modifica la configuración de LAN si es necesario.

Wizard / pfSense Setup / Configure LAN Interface

Step 5 of 9

Configure LAN Interface

On this screen the Local Area Network information will be configured.

LAN IP Address	<input type="text" value="192.168.100.1"/>
----------------	--

Type dhcp if this interface uses DHCP to obtain its IP address.

Subnet Mask	<input type="text" value="24"/>
-------------	---------------------------------

>> Next

7. Cambia la contraseña del usuario administrador.

Wizard / pfSense Setup / Set Admin WebGUI Password

Step 6 of 9

Set Admin WebGUI Password

On this screen the admin password will be set, which is used to access the WebGUI and also SSH services if enabled.

Admin Password	<input type="password" value="....."/>
----------------	--

Admin Password AGAIN	<input type="password" value="....."/>
----------------------	--

>> Next

8. Selecciona **recargar** para recargar la GUI web.

Wizard / pfSense Setup / Reload configuration

Step 7 of 9

Reload configuration

Click 'Reload' to reload pfSense with new changes.

>> Reload

Una vez se recargue nos aparecerá la GUI tal que así:

pfSense  
COMMUNITY EDITION

System ▾Interfaces ▾Firewall ▾Services ▾VPN ▾Status ▾Diagnostics ▾Help ▾

3

WARNING: The 'admin' account password is set to the default value. [Change the password in the User Manager.](#)

Status / Dashboard

System Information

Name	pfSense.localdomain
User	admin@10.0.0.62 (Local Database)
System	pfSense Netgate Device ID: efce5cb0bc5ad5e256bf
BIOS	Vendor: American Megatrends Inc. Version: WTGLKC1R110-G Release Date: Fri Nov 1 2019
Version	2.4.5-RELEASE (amd64) built on Tue Mar 24 15:25:50 EDT 2020 FreeBSD 11.3-STABLE  The system is on the latest version. Version information updated at Thu Apr 9 6:51:30 UTC 2020
CPU Type	Intel(R) Celeron(R) J4105 CPU @ 1.50GHz Current: 1500 MHz, Max: 1501 MHz 4 CPUs: 1 package(s) x 4 core(s) AES-NI CPU Crypto: Yes (inactive)
Kernel PTI	Enabled
MDS Mitigation	Inactive
Uptime	00 Hour 40 Minutes 21 Seconds
Current date/time	Thu Apr 9 6:52:04 UTC 2020
DNS server(s)	<ul style="list-style-type: none"><li>127.0.0.1</li><li>10.0.0.1</li></ul>
Last config change	Thu Apr 9 6:41:08 UTC 2020
State table size	0% (9/791000) <a href="#">Show states</a>
MBUF Usage	1% (6086/1000000)

Netgate Services And Support

Contract type  
Community Support  
Community Support Only

NETGATE AND pfSense COMMUNITY SUPPORT RESOURCES

If you purchased your pfSense gateway firewall appliance from Netgate and elected **Community Support** at the point of sale or installed pfSense on your own hardware, you have access to various community support resources. This includes the [NETGATE RESOURCE LIBRARY](#).

You also may upgrade to a Netgate Global Technical Assistance Center (TAC) Support subscription. We're always on! Our team is staffed 24x7x365 and committed to delivering enterprise-class, worldwide support at a price point that is more than competitive when compared to others in our space.

- Upgrade Your Support
- Community Support Resources
- Netgate Global Support FAQ
- Official pfSense Training by Netgate
- Netgate Professional Services
- Visit Netgate.com

If you decide to purchase a Netgate Global TAC Support subscription, you **MUST** have your **Netgate Device ID (NDI)** from your firewall in order to validate support for this unit. Write down your NDI and store it in a safe place. You can purchase TAC support [here](#).

Interfaces

WAN

1000baseT <full-duplex>

10.0.0.89

Revision #1

Created 16 April 2023 17:06:29 by Xavi

Updated 17 April 2023 13:53:30 by Xavi